



Manual for installation,
use and maintenance

MXD4509

Integrated dishwasher

Contents

3	Important information
4	User information
6	Before first use
6	Diagram of dishwasher
7	Using the dishwasher
7	Control Panel
10	Preparing and loading dishes
12	Basket loading tips
15	Water softener
18	Rinse aid and detergent
21	Cleaning and maintenance
25	Installation
28	Aesthetic panel installation
31	Error warnings
32	Troubleshooting
36	Technical information
38	Electical Information

IMPORTANT: Please read this instruction manual carefully before installation or using the appliance for the first time. Failure to install this appliance, or to have it installed, as per the instruction manual could invalidate your warranty.

Any service calls relating to misuse or incorrect installation could incur a service charge.

Please check our website for up to date manuals, as new information and changes are sometimes added.

Important information

The CDA Group Ltd. cannot be held responsible for injuries or losses caused by incorrect use or installation of this product. Please note that CDA reserves the right to invalidate the warranty supplied with this product following incorrect installation or misuse of the appliance.

This appliance is not designed to be used by people (including children) with reduced physical, sensorial or mental capacity, or who lack experience or knowledge about it, unless they have had supervision or instructions on how to use the appliance by someone who is responsible for their safety.

Under no circumstances should any external covers be removed for servicing or maintenance except by suitably qualified personnel.

Appliance information

Please enter the details on the appliance rating plate below for reference, to assist CDA Customer Care in the event of a fault with your appliance and to register your appliance for warranty purposes.

Appliance Model	
------------------------	--

Serial Number	
----------------------	--

UK EU Declarations of Conformity:


This appliance has been manufactured to the strictest standards and complies with all applicable legislation and the following European Directives.

- Electrical Equipment (Safety) Regulations 2016
- The Low Voltage Directive 2014/35/EU
- Electromagnetic Compatibility Regulations 2016
- Electromagnetic Compatibility Directive 2014/30/EU
- ErP Directive 2009/125/EU

The product has been marked with the **CE** UKCA symbol and the Declaration of Conformity has been issued to the manufacturer and is available to the competent authorities regulating the market.

IMPORTANT INFORMATION FOR CORRECT DISPOSAL OF THE PRODUCT IN ACCORDANCE WITH EC DIRECTIVE 2012/19/EU.

At the end of its working life, the product must be taken to a special local authority waste collection centre or to a dealer providing appliance recycling services.

Disposing of a household appliance separately avoids possible negative consequences for the environment and health. It also enables the constituent materials to be recovered, saving both energy and resources. As a reminder of the need to dispose of household appliances separately, the product is marked with a crossed-out wheeled dustbin .

User information

- Read the instructions prior to installation and use of the appliance.
- Do not lean or climb on the open dishwasher door, to prevent damage.
- Close the dishwasher door after use to prevent accidents.
- Use only detergents, salt and rinse aid specifically designed for dishwashers.
- Do not put solvents in the dishwasher detergent compartment to prevent risk of explosion.
- Only put dishwasher safe items into the dishwasher. If in doubt, check with the manufacturer of the items.
- Take care when loading the dishwasher to observe the recommendations for best loading practice, and also to ensure that sharp objects such as knives are placed blade down to prevent accidents.
- Do not open the dishwasher door when a program is running. If it is necessary to do so, then open it only slightly to allow the dishwasher to pause the program and prevent any water spilling out. Remember that the water in the dishwasher can be very hot when the program is running.
- When the dishwasher is not in use, we recommend that you turn off the water supply at the supply tap and disconnect the main supply.
- If you are leaving the dishwasher for an extended period you should leave the door slightly open to prevent the formation of unpleasant smells.
- This appliance can be used by children aged from 8 years and above and persons with reduced physical, sensory or mental capabilities

or lack of experience and knowledge if they have been given supervision or instruction concerning use of the appliance in a safe way and understand the hazards involved. Children shall not play with the appliance. Cleaning and user maintenance shall not be made by children without supervision.

- The plastic housing on the water inlet pipe contains an electrically operated valve. The wires that connect to this valve are inside the inlet hose. Do not cut through the inlet hose and do not put the plastic housing in water.
- Children could get locked inside the appliance. Therefore, when disposing of an old appliance cut off the plug and set aside. Damage the door lock so that the door can no longer be closed.

Recommendations

- To reduce energy and water consumption, remove all dirt residues from the dishes prior to loading the dishwasher.
- Loading the dishwasher to the capacity indicated by the manufacturer will save energy and water.
- Place hollow items (bowls, glasses and pans) face down in the basket.
- Do not put dishes, cutlery or other items with tobacco ash, wax, lubricating grease or paint residues in the dishwasher.
- It is not recommended to pre-rinse the tableware, as this leads to an increase in water and energy consumption.
- Washing tableware in a household dishwasher usually uses less energy and water than washing up by hand.

Unpacking

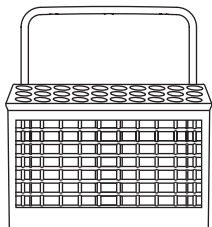
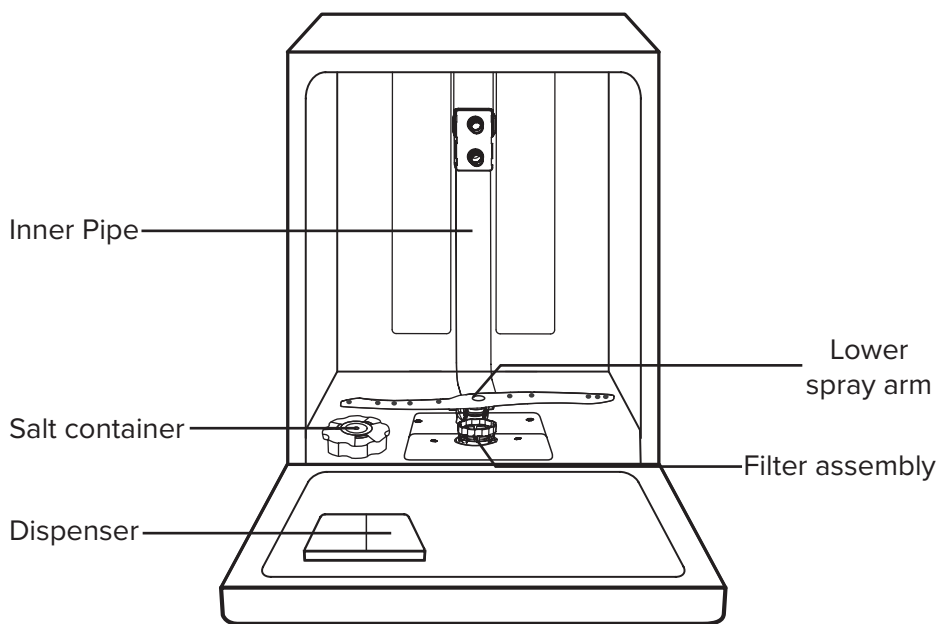
During transportation, protective packaging is used to protect the appliance against any damage.

- After unpacking, please dispose of all elements of packaging in a way that will not cause damage to the environment.
- All materials used for packaging the appliance are environmentally friendly; they are 100% recyclable and are marked with the appropriate symbol.
- **WARNING!** While unpacking, packaging materials (polythene bags, polystyrene pieces, etc.) should be kept out of reach of children.

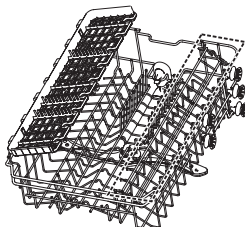
Before first use

- Remove all the packaging materials from the interior of the dishwasher.
- Set the water softener level as required by the water hardness level for the area (see pages 15-16).
- Add salt into the salt container (see page 17).
- Run a hot program without any dishes in the dishwasher.

Diagram of the dishwasher



Cutlery basket



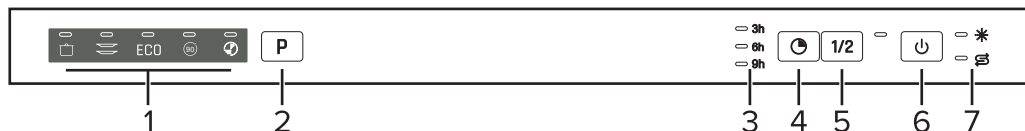
Upper basket



Lower basket



Using the dishwasher

Control Panel



1 - Program indicator	Intensive Heavily soiled items, such as pots and pans, with dried on food
	Universal For normally soiled loads, such as pots plates, glasses and lightly soiled pans
	ECO ECO This is the standard program suitable for normally soiled loads, such as pots, plates, glasses and lightly soiled pans
	90 Min For normally soiled loads that need a quick wash
	Rapid A shorter wash for lightly soiled loads that do not need drying
2 - Program button	Press to cycle through and select the desired program, the selected program indicator will light up
3 - Delay indicators	Shows the selected delay time (3 hours/ 6hours/ 9hours)
4 - Delay button	Press to set a delay time
5 - Half-load button	When you have around 6 or less place settings of dishware to wash, you can choose this function to save energy and water. (It can only be used with Intensive, Universal, ECO and 90 min.)
6 - Power button	Press this button to turn the dishwasher on/off





Table continued on the next page

7 - Warning indicators	 Rinse Aid If the indicator is lit, it means the dishwasher is low on rinse aid and needs refilling
	 Salt If the indicator is lit, it means the dishwasher is low on salt and needs refilling

Wash cycle information

The table below shows which programs are best for the levels of food residue on them and how much detergent is needed. It also shows various information about the programs. Consumption values and program duration are only indicative (except for the ECO program).

● Indicates that the program uses rinse aid in the last rinse.

Program	Description of cycle	Detergent pre/main wash	Running time (mins)	Energy (kWh)	Water (L)	Rinse Aid
 Intensive	Pre-wash (50°C) Wash (65°C) Rinse Rinse Rinse (65°C) Drying	4/13g	205	1.378	15.3	●
 Universal	Pre-wash (45°C) Wash (55°C) Rinse Rinse (65°C) Drying	4/13g	175	1.287	13.1	●
ECO ECO	Wash (45°C) Rinse Rinse (60°C) Drying	17g	235	0.704	9.0	●
 90 Min	Wash (60°C) Rinse Rinse (65°C) Drying	17g	90	1.234	10.2	●
 Rapid	Wash (50°C) Rinse Rinse (45°C)	12g	30	0.611	10.0	

NOTE: The ECO program is suitable to clean normally soiled tableware, which makes it the most efficient program in terms of its combined energy and water consumption for this use, and it is used to assess compliance with the EU ecodesign legislation.

Saving Energy

Pre-rinsing of tableware items leads to increased water and energy consumption and is not recommended.

Washing tableware in a household dishwasher usually consumes less energy and water in the use phase than hand dishwashing when the household dishwasher is used according to the instructions.

Changing the program mid-cycle

A program can only be changed if it has been running for a short period of time, otherwise the detergent may have already been released or the wash water with detergent has already been drained. If this is the case, the dishwasher needs to be reset and the detergent dispenser must be refilled. To reset the dishwasher, follow the instructions below:

1. Open the door a little to stop the dishwasher, after the spray arm has stopped working, you can open the door completely.
2. Press the program button for more than three seconds, the machine will be in program selection mode.
3. You can then change the program to the desired cycle setting.



Stopping the program mid-cycle

Forgotten dishes can be added any time before the detergent dispenser opens. If this is the case, follow the instructions below:

1. Open the door a little to stop the washing.
2. After the spray arms stopped working, you can open the door completely.
3. Add the forgotten dishes.
4. Close the door.
5. The dishwasher will start running again.

WARNING!: Take care when opening the door mid-cycle, as hot steam may scald you.

Preparing and loading dishes

You should only place utensils that are identified as dishwasher-proof.

For particular items, select a program with the lowest possible temperature.

To prevent damage to utensils, do not take glass and cutlery out of the dishwasher immediately after the program has ended.

Not suitable:

- Cutlery with wooden, horn china or mother-of-pearl handles
- Plastic items that are not heat resistant
- Older cutlery with glued parts that are not temperature resistant
- Bonded cutlery items or dishes
- Pewter or cooper items
- Crystal glass
- Steel items subject to rusting
- Wooden platters
- Items made from synthetic fibres

Limited suitability:

- Some types of glasses can become dull after a large number of washes
- Silver and aluminum parts have a tendency to discolor during washing
- Glazed patterns may fade if machine washed frequently

Recommendations for loading the dishwasher

Scrape off any large amounts of leftover food. Soften remnants of burnt food in pans. It is not necessary to rinse the dishes under running water.

For best performance of the dishwasher, follow these loading guidelines.

Place objects in the dishwasher in the following way:

- Items such as cups, glasses, pots, pans, etc. must face downwards.
- Curved items, or ones with recesses, should be loaded at a slant so

that water can run off.

- All utensils are stacked securely and won't tip over.
- All utensils are placed in the way that the spray arms can rotate freely during washing.
- Load hollow items such as cups, glasses, pans etc. With the opening facing downwards so that water cannot collect in the container or a deep base.
- Dishes and items of cutlery must not lie inside one another, or cover each other.
- To avoid damage, glasses should not touch one another.
- The upper basket is designed to hold more delicate and lighter dishware such as glasses, coffee and tea cups.
- Long bladed knives stored in an upright position are a potential hazard!
- Long and sharp items of cutlery such as carving knives should be positioned horizontally in the upper basket.
- Please do not overload your dishwasher. This is important for good results and for reasonable consumption of energy.

NOTE: Very small items should not be washed in the dishwasher as they could easily fall out of the basket.

Removing the dishes:

To prevent water dripping from the upper basket into the lower basket, we recommend that you empty the lower basket first, followed by the upper basket.

WARNING!: Items will be hot. To prevent injury, do not take glass and metal utensils out of the dishwasher for around 15 minutes after the program has ended.

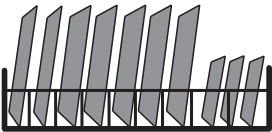
Loading the upper basket

The upper basket is designed to hold more delicate and lighter dishware such as glasses, coffee and tea cups and saucers, as well as plates, small bowls and shallow pans (as long as they are not too dirty). Position the dishes and cookware so that they will not get moved by the spray of water.



Loading the lower basket

We suggest that you place large and difficult to clean items into the lower basket: such as pots, pans, lids, serving dishes and bowls. It is preferable to place serving dishes and lids on the side of the racks in order to avoid blocking the rotation of the top spray arm. The maximum diameter advised for plates in front of the detergent dispenser is of 19 cm, so as not to impede the opening of it.



Loading the cutlery basket

Cutlery should be placed in the cutlery basket separate from each other in the appropriate positions. Avoid nesting of the cutlery to prevent insufficient cleaning performance.

WARNING!: Do not let utensils extend through the bottom and always load sharp utensils with the sharp point down.

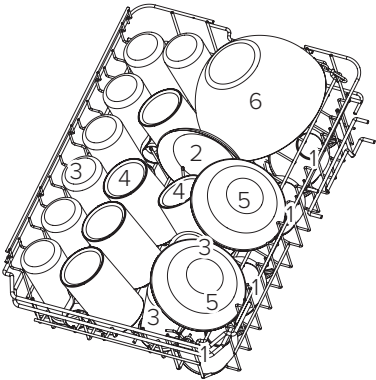
Basket loading tips

Loading the baskets (according to ECO program)

Loading the dishwasher to its full capacity will contribute to energy and water savings.

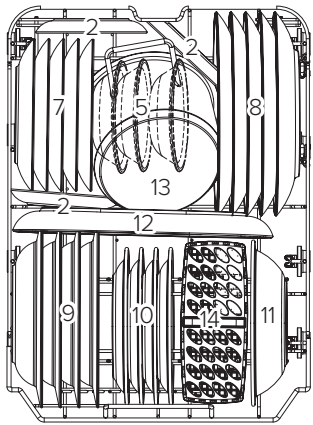
Upper basket:

1	Cups
2	Saucers
3	Glasses
4	Mugs
5	Dessert bowls
6	Glass bowl(s)



Lower basket:

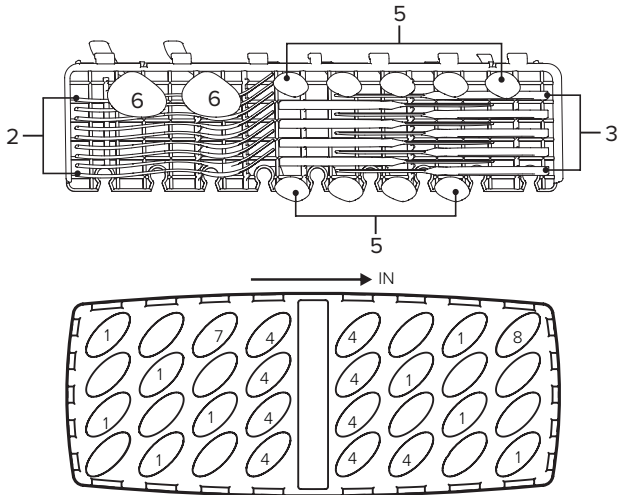
7	Dessert plates
8	Dinner plates
9	Soup plates
10	Melamine plates
11	Melamine bowls
12	Platter (oval)
13	Small pot
14	Cutlery basket



Cutlery rack and basket:

NOTE: Please place the light flat utensils on the rack. The maximum loading weight is 1.5kg.

1	Soup spoons
2	Forks
3	Knives
4	Tea spoons
5	Dessert spoons
6	Serving spoons
7	Serving fork
8	Gravy ladle



Information for comparability tests with ECO program

Capacity: 9 Place settings

Position of the upper basket: Lower position

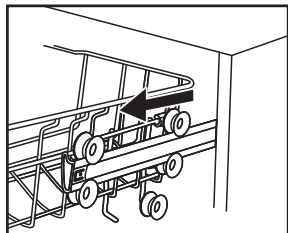
Program: ECO

Rinse aid setting: MAX

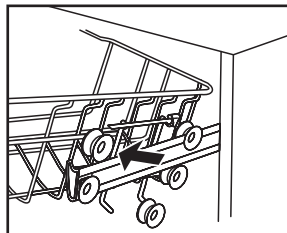
Softener setting: H3

Adjusting the upper basket

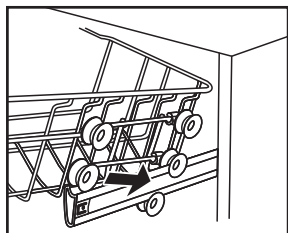
To adjust the height of the upper basket, follow these steps:



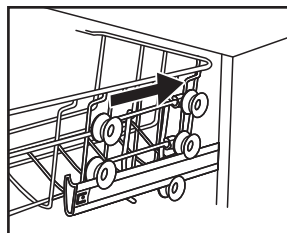
1 - Pull out the upper basket



2 - Remove the upper basket



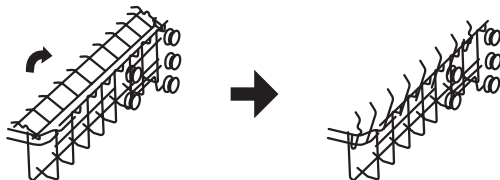
3 - Re-attach the upper basket to the upper or lower rollers



4 - Push in the upper basket

Folding back the cup shelves

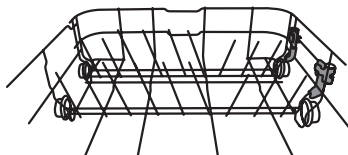
To make room for taller items in the upper basket, raise the cup rack upwards. You can then lean the tall glasses against it. You can also remove it when it is not required for use.



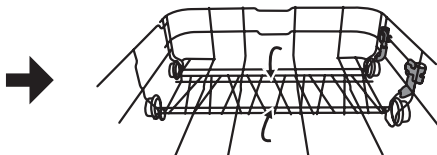
Folding back the rack shelves

The prongs on the lower basket are used for holding plates and platters. They can be lowered to make more room for large items.

Raise upwards



Fold backwards



Water softener

The water softener must be set manually, using the water hardness dial.

The water softener is designed to remove minerals and salts from the water, which would have a detrimental or adverse effect on the operation of the appliance.

The more minerals there are, the harder your water is.

The softener should be adjusted according to the hardness of the water in your area.

Your local Water Authority can advise you on the hardness of the water in your area.

Adjusting salt consumption

The dishwasher is designed to allow for adjustment in the amount of salt consumed based on the hardness of the water used. This is intended to optimise and customise the level of salt consumption.

Follow the steps below for adjustment in salt consumption:

1. Open the door and switch on the appliance.
2. Within 60 seconds after the appliance is switched on press the program button for more than 5 seconds to enter the water softener setting mode.
3. Press the program button again to select the correct setting according to your local area and the setting will change in the following sequence: H1 - H2 - H3 - H4 - H5 - H6
4. Press the power button to end the setting mode.

See more information on the next page

Water Hardness		Water softener level	Regeneration occurs every X program sequence**	Salt consumption (g/cycle)
British*	Mmol/l			
0-6	0-0.94	H1 - Rapid Indicator	No regeneration	0
7-14	1.0-2.0	H2 - 90 Min indicator	10	9
15-21	2.1-3.0	H3 - 90 Min, Rapid indicator	5	12
22-28	3.1-4.0	H4 - Eco indicator	3	20
29-42	4.1-6.0	H5 - Eco, Rapid indicator	2	30
43-69	6.1-9.8	H6 - Eco, 90 Min indicator	1	60

*British Clarke=1.78mmol/l

**Every cycle with a regeneration operation consumes an addition 2 litres of water, the energy consumption increases by 0.02kWh and the program extends by 4 minutes.

NOTE: The factory setting is H3.

The hardness of the water varies from place to place. If hard water is used in the dishwasher, deposits may form on the dishes and utensils.

The appliance is equipped with a special softener that uses a salt container specifically designed to eliminate lime and minerals from the water.

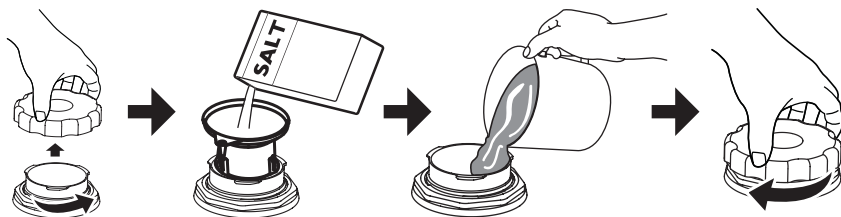
Loading the salt into the softener

NOTE: Only use salt specifically designed for dishwasher use. Not all types of salt are specifically designed for dishwasher use. Table salt, for example, will damage the water softener. In case of damages caused by the use of unsuitable salt will impact the warranty of the appliance.

NOTE: Only fill with salt before running a cycle. This will prevent any grains of salt or salty water, which may have been spilled, remaining on the bottom of the machine for any period of time, which may cause corrosion.

To add salt to the softener:

1. Remove the lower basket and unscrew the reservoir cap.
2. Place the end of the funnel (if supplied) into the hole and pour in about 1.5 kg of dishwasher salt.
3. Fill the salt container to its maximum limit with water, It is normal for a small amount of water to come out of the salt container.
4. After filling the container, screw back the cap tightly.
5. The salt warning light will turn off after the salt container has been filled with salt.
6. Immediately after filling the salt into the salt container, a washing program should be started (We suggest to use a short program). Otherwise the filter system, pump or other important parts of the machine may be damaged by salty water. This is out of warranty.



NOTE: The salt container must only be refilled when the salt warning light (S) on the control panel comes on. Depending on how well the salt dissolves, the salt warning light may still be on even though the salt container is filled.

NOTE: If salt has spilled, run a soak or quick program to remove it.

Rinse aid and detergent

The rinse aid is released during the final rinse to prevent water from forming droplets on your dishes, which can leave spots and streaks. It also improves drying by allowing water to run off the dishes. Your dishwasher is designed to use liquid rinse aids.

NOTE: Only use branded rinse aid for dishwasher. Never fill the rinse aid dispenser with any other substances (e.g. Dishwasher cleaning agent, liquid detergent). This would damage the appliance.

When to refill the rinse aid

The frequency of the dispenser needing to be refilled depends on how often dishes are washed and the rinse aid setting used.

- The low rinse aid indicator (※) light up when more rinse aid is needed.
- Do not overfill the rinse aid dispenser.

Function of detergent

The chemical ingredients that compose the detergent are necessary to remove, crush and dispense all dirt out of the dishwasher. Most of the commercial quality detergents are suitable for this purpose.

WARNING!: Use only detergent specifically made for dishwashers use. Keep your detergent fresh and dry. Do not fill detergent into the dispenser until you are ready to start the dishwasher.

Dishwasher detergent is corrosive. Keep out of reach of children.

Adjusting the rinse aid reservoir

To achieve a better drying performance with limited rinse aid, the dishwasher is designed to adjust the consumption by the user. Follow the steps below:

1. Open the door, switch on the appliance.
2. Within 60 seconds after the appliance was switched on press the program button for more than 5 seconds, and then press the Delay button to enter the set model, the rinse aid indication blinks as 1Hz frequency.
3. Press the Program button again to select the appropriate setting according to the desired use. The setting will change in the following

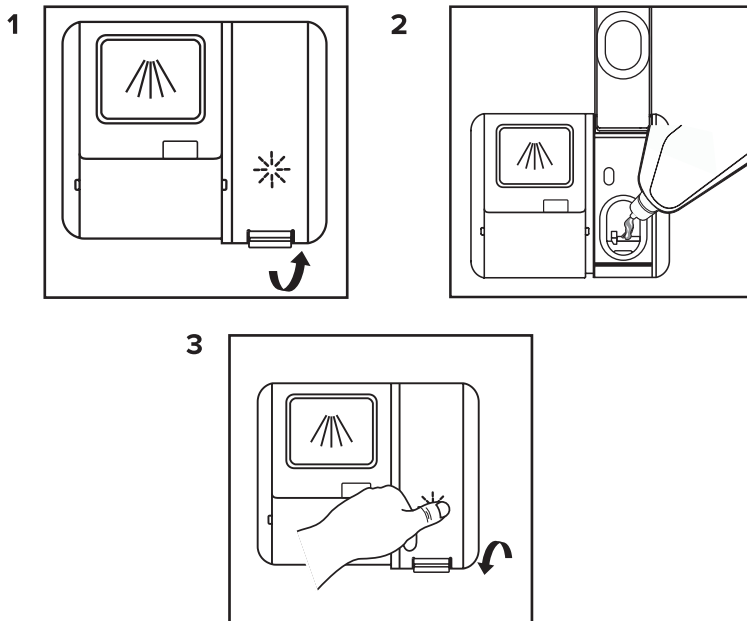
sequence: D1 - D2 - D3 - D4 - D5 - D1. The higher the number, the more rinse aid the dishwasher uses.

4. The dishwasher will exit the setting mode automatically after 5 seconds or if you press the power button.

Rinse aid level	Lit Indicator
D1	Rapid
D2	90 Min
D3	Rapid & 90 Min
D4	ECO
D5	Rapid & ECO

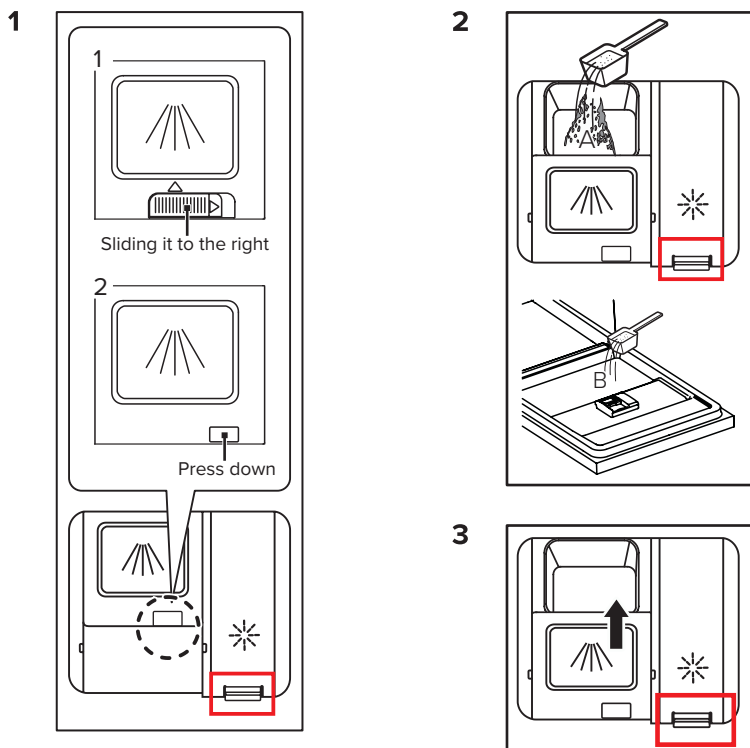
Filling the rinse aid reservoir

1. Remove the rinse reservoir cap by lifting up the handle.
2. Pour the rinse aid into the dispenser, being careful not to overfill.
3. Close the cap.



Filling the detergent dispenser

NOTE: Please observe the manufacturer's recommendations on the detergent packaging.



1. Open the cap by either sliding the release catch (1) or pressing down the release latch (2).
2. Add detergent into the larger cavity (A) for main wash. For better cleaning results, especially if you have very dirty items, pour a small amount of detergent onto the door. The additional detergent will activate during the pre-wash phase.
3. Close the flap by sliding it to the front and then pressing it down.

Cleaning and maintenance

External care

Door and door seal

Clean the door seals regularly with a soft damp cloth to remove food deposits. When the dishwasher is being loaded, food and drink residues may drip onto the sides of the dishwasher door. These surfaces are outside the wash cabinet and are not accessed by water from the spray arms. Any deposits should be wiped off before the door is closed.

Control panel

If cleaning is required, the control panel should be wiped with a soft damp cloth only.

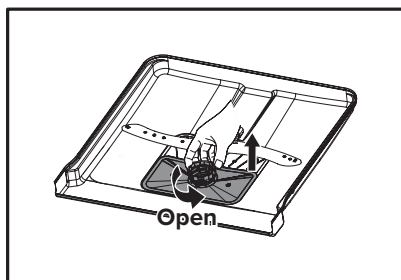
Warning!: To avoid penetration of water into the door lock and electrical components, do not use a spray or steam cleaner of any kind.

Never use abrasive cleaners or scouring pads on the outer surfaces because they may scratch the finish. Some paper towels may also scratch or leave marks on the surface.

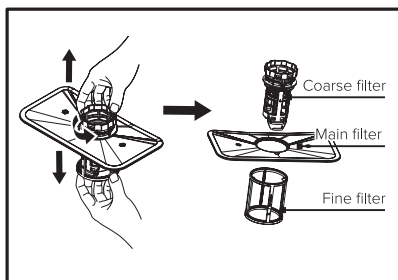
Internal care

Filtering system

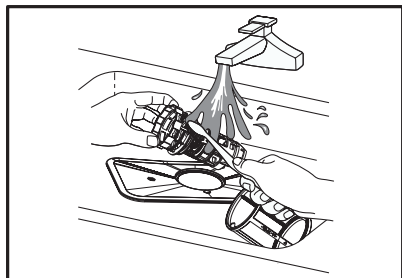
The filtering system in the base of the wash cabinet catches coarse debris from the washing cycle, including foreign objects such as tooth picks or shards. The collected coarse debris may cause the filters to clog. Check the condition of the filters regularly, carefully remove foreign objects and clean the parts of the filtering system if necessary with water. Follow the steps below to clean the filter.



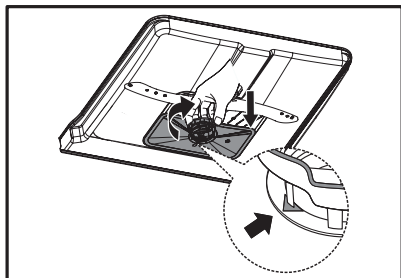
1 - Hold the coarse filter and rotate it anticlockwise to unlock the filter. Lift the filter upwards and out of the dishwasher.



2 - Pull the fine filter off of the assembly. Gently squeeze the tabs at the top of the coarse filter and pulling it off the main filter.



3 - Larger food remnants can be cleaned by rinsing the filter under running water. For a more thorough clean, use a soft cleaning brush.



4 - Reassemble the filters in the reverse order of the disassembly, replace the filter insert, and rotate clockwise to the close arrow.

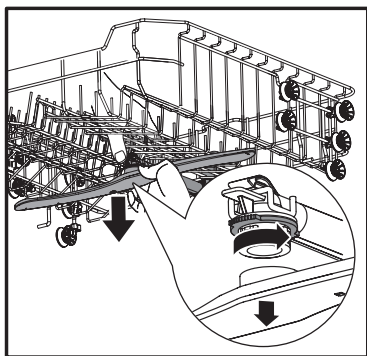
WARNING!: Do not over tighten the filters. Put the filters back in sequence securely, otherwise coarse debris could get into the system and cause a blockage.

WARNING!: Never use the dishwasher without filters in place. Improper replacement of the filter may reduce the performance level of the appliance and damage dishes and utensils.

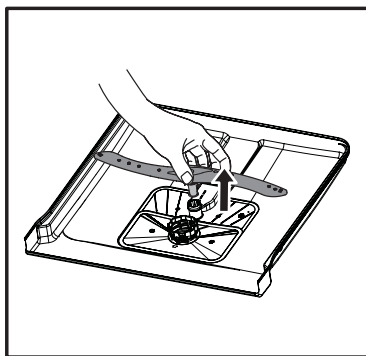
Spray arms

It is necessary to clean the spray arms regularly for hard water chemicals will clog the spray arm jets and bearings.

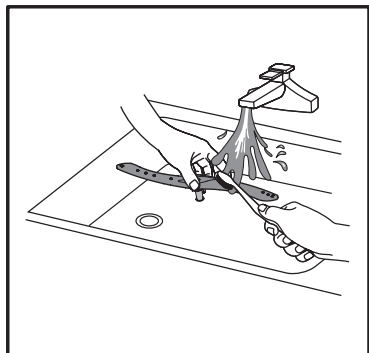
To clean the spray arms, follow the instructions below:



1 - To remove the upper spray arm, hold the nut in the centre still and rotate the spray arm counterclockwise to remove it.



2 - To remove the lower spray arm, pull out the spray arm upward.



3 - Wash the arms in soapy and warm water and use a soft brush to clean the jets. Replace them after rinsing them thoroughly.

Frost precaution

Please take frost protection measures on the dishwasher in winter. Every time after washing cycles, please operate as follows:

1. Cut off the electrical power to the dishwasher at the supply source.
2. Turn off the water supply and disconnect the water inlet pipe from the water valve.
3. Drain the water from the inlet pipe and water valve. (Use a pan to gather the water)
4. Reconnect the water inlet pipe to the water valve.
5. Remove the filter at the bottom of the tub and use a sponge to soak up water in the recess.

After every wash

After every wash, turn off the water supply to the appliance and leave the door slightly open for a while so that moisture and odors are not trapped inside.

Unplugging the dishwasher

Before cleaning or performing maintenance, always remove the plug from the socket.

Solvents or abrasive cleaning

To clean the exterior and rubber parts of the dishwasher, do not use solvents or abrasive cleaning products. Only use a cloth with warm soapy water.

To remove spots or stains from the surface of the interior, use a cloth dampened with water an a little vinegar, or a cleaning product made specifically for dishwashers.

When not in use for a long time

It is recommended that you run a wash cycle with the dishwasher empty and then remove the plug from the socket, turn off the water supply and leave the door of the appliance slightly open. This will help the door seals to last longer and prevent odors from forming within the appliance.

Moving the appliance

If the appliance must be moved, try to keep it in the vertical position. If absolutely necessary, it can be positioned on its back.

Seals

One of the factors that cause odours to form in the dishwasher is food that remains trapped in the seals. Periodic cleaning with a damp sponge will prevent this from occurring.

Installation

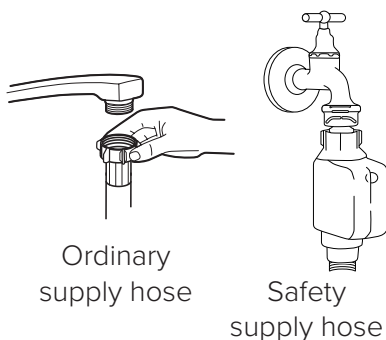
WARNING!: Electrical Shock Hazard! Disconnect electrical power before installing dishwasher. Failure to do so could result in electrical shock and death.

NOTE: The installation of the pipes and electrical equipments should be done by professionals.

Water supply and drain

Cold water connection

Connect the cold water supply hose to a threaded 3/4(inch) connector and make sure that it is fastened tightly in place. If the water pipes are new or have not been used for an extended period of time, let the water run to make sure that the water is clear. This precaution is needed to avoid the risk of the water inlet to be blocked and damage the appliance.



Safety supply hose

The safety supply hose consists of the double walls. The system guarantees its intervention by blocking the flow of water in case of the supply hose breaking and when the air space between the supply hose itself and the outer corrugated hose is full of water.

WARNING!: A hose that attaches to a tap can burst if it is installed on the same water line as the dishwasher. If your sink has one, it is recommended that the hose be disconnected and the hole plugged.

Connecting the safety supply hose

1. Pull the safety supply hose out of the storage compartment located at the rear of the dishwasher.
2. Tighten the screws of the safety supply hose to the faucet.
3. Turn the water fully on before starting the dishwasher.

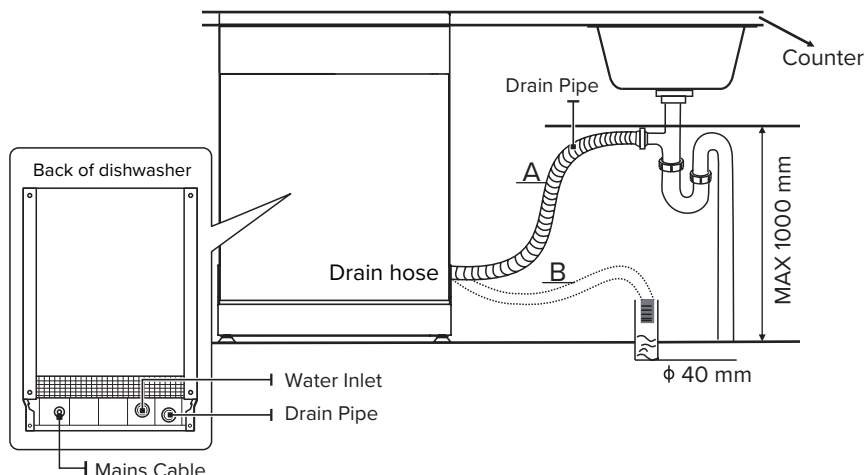
How to disconnect the safety supply hose

1. Turn off the water.
2. Unscrew the safety supply hose from the faucet.

Connection of drain hoses

Insert the drain hose into a drain pipe with a minimum diameter of 4 cm, or let it run into the sink, making sure to avoid bending or crimping it. The height of drain pipe must be less than 1000 mm. The free end of the hose must not be immersed in water to avoid the back flow of it.

NOTE: Securely fix the drain hose in either position A or position B.



Draining excess water from hoses

If the connection to the drain pipe is positioned higher than 1000 mm, excess water may remain in the drain hose. It will be necessary to drain excess water from the hose into a bowl or suitable container that is held outside and lower than the sink.

Water outlet

Connect the water drain hose. The drain hose must be correctly fitted to avoid water leaks. Ensure that the water drain hose is not kinked or squashed.

Extension hose

If you need a drain hose extension, make sure to use a similar drain hose. It must not be longer than 4 meters, otherwise the cleaning effect of the dishwasher could be reduced.

Syphon connection

The waste connection must be at a height less than 1000mm (maximum) from the bottom of the dishwasher.

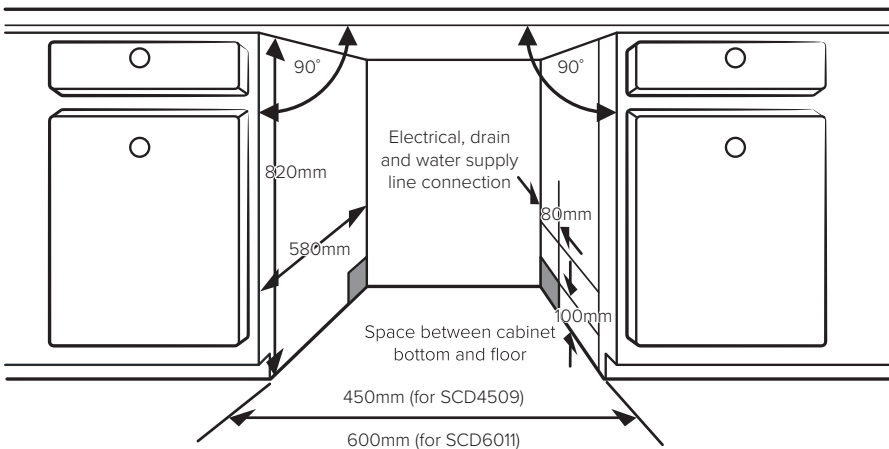
Positioning the appliance

Position the appliance in the desired location. The back should rest against the wall behind it, and the sides, along the adjacent cabinets or walls. The dishwasher is equipped with water supply and drain hoses that can be positioned either to the right or the left sides to facilitate proper installation.

Selecting the best location for the dishwasher

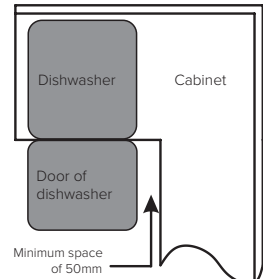
The installation position of the dishwasher should be near the existing inlet and drain hose and power socket.

1. Less than 5mm between the top of dishwasher and cabinet and the outer door aligned to the cabinet.



2. If the dishwasher is installed at the corner of the cabinet, there should be adequate space when the door is opened.

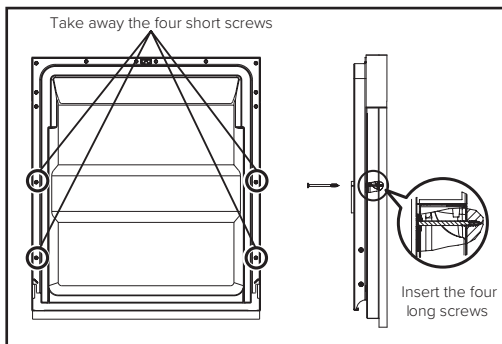
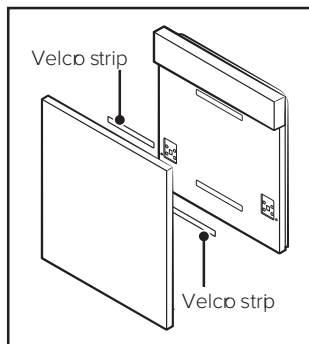
NOTE: Depending on where your electrical outlet is, you may need to cut a hole in the opposite cabinet side.



Decor panel installation

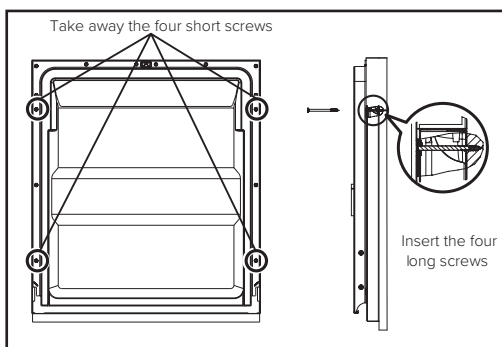
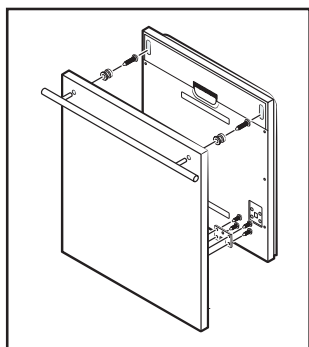
Semi-integrated

Separate velcro stripe A and velcro stripe B and attach velcro stripe A on the inner side of the decor panel. Attach the felted velcro stripe B on the outer door of dishwasher. After positioning of the panel, fix the panel onto the outer door by screws and bolts.



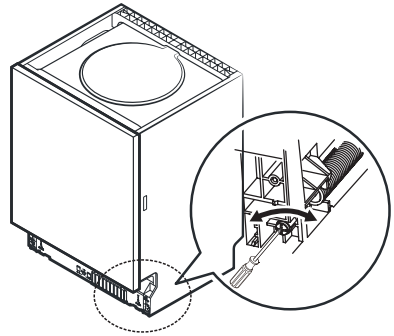
Fully-integrated model

Install the hook on the decor panel and put the hook into the slot of the outer door of dishwasher. After positioning of the panel, fix the panel onto the outer door by screws and bolts.



Adjusting the door spring tension

1. The door springs are set at the factory to the proper tension for the outer door. If an aesthetic panel is installed, you will have to adjust the door spring tension. Rotate the adjusting screw to drive the adjuster to strain or relax the steel cable.
2. The door spring tension is correct when the door remains horizontal in the fully opened position, yet rises to a close with the slight lift.

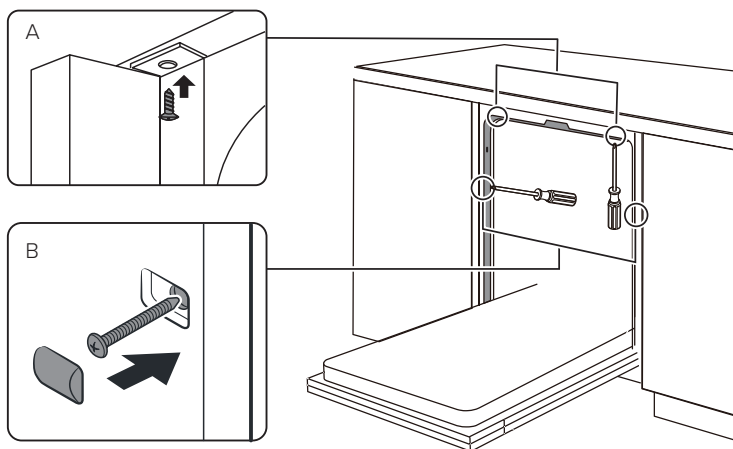


Installation steps

1. Fix the condensation strip under the work surface of the cabinet. Please ensure the condensation strip is flush with edge of work surface.
2. Connect the inlet hose to the cold water supply (Page 25).
3. Connect the drain hose (Page 26).
4. Connect the power cord.
5. Place the dishwasher into the cabinet.
6. Level the dishwasher. The rear foot can be adjusted from the front of the dishwasher by turning the Philips screw in the middle of the base of dishwasher use a Philips screw driver. To adjust the front feet, use a flat screw driver and turn the front feet until the dishwasher is level (See page 30).
7. Install the furniture door to the outer door of the dishwasher (See page 28).
8. Adjust the tension of the door springs by using a Philips screw driver turning in a clockwise motion to tighten the left and right door springs. Failure to do this could cause damage to your dishwasher (See above).
9. The dishwasher must be secured in place. There are two ways to do this (See on next page):

A: Normal work tops: Put the installation hook into the slot of the side plane it to the work surface with screws.

B: Marble or granite work tops: Fix to the side with screws.

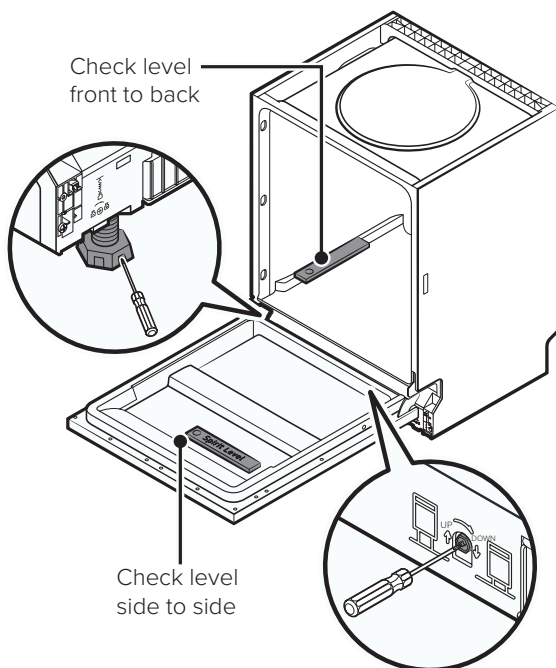


Leveling the dishwasher

Dishwasher must be level for proper dish rack operation and wash performance.

1. Place a spirit level on the door and rack track inside the tub as shown to check that the dishwasher is level.
2. Level the dishwasher by adjusting the three leveling feet individually.
3. When leveling the dishwasher, please pay attention so as not to let it tip over.

NOTE: The maximum adjustment height of the feet is 50mm.



Error indicators

If there is a malfunction the dishwasher will display an error code. The following table shows possible error codes and their causes.

Warning	Meaning	Possible causes
Rapid indicator flashing	Longer inlet time	Faucets are not opened. Water intake is too low. Water pressure is too low.
Rapid and 90 min indicators flashing	Not reaching required temperature	Malfunction with heating element
ECO indicator flashing	Overflow	Dishwasher is leaking
Universal, ECO and Rapid indicators flashing	Failure between main circuit board and the display circuit board	Open circuit or broken wiring

WARNING! If an overflow occurs, turn off the main water supply before calling CDA customer care.

If there is water in the base pan because of an overfill or small leak, the water should be removed before restarting the dishwasher.

If there is an error code that cannot be solved, please contact CDA customer care.

Troubleshooting

Before calling CDA customer care, review the following table to see if there is a solution for a problem with the dishwasher.

Problem	Possible cause	Possible solution
Dishwasher is not starting	Fuse is blown or circuit break has tripped	Replace fuse or reset circuit breaker. Remove any other appliances sharing the same circuit with the dishwasher.
	Power supply is not turned on.	Make sure the dishwasher is turned on and the door is closed securely. Make sure the power cord is properly plugged into the wall socket.
	Water pressure is low	Check that the water supply is connected properly and the water is turned on.
	Door of dishwasher not properly closed.	Make sure to close the door properly and latch it.
Water not pumped form dishwasher	Twisted or trapped drain hose	Check the drain hose.
	Filter clogged	Check the filter system.
	Kitchen sink clogged.	Check the kitchen sink to make sure it is draining well. If the problem is the kitchen sink that is not draining , you may need a plumber rather than a serviceman for dishwashers.
Foam in the tub	Wrong detergent	Use only the special dishwasher detergent to avoid suds. If this occurs, open the dishwasher and let suds evaporate. Add 1 litre of cold water to the bottom of the dishwasher. Close the dishwasher door, then select any cycle. Initially, the dishwasher will drain out the water. Open the door after draining stage is complete and check if the suds have disappeared. Repeat if necessary.
	Spilled rinse aid	Always wipe up rinse aid spills immediately.

Problem	Possible cause	Possible solution
Stained tub interior	Detergent with colourant may have been used	Make sure that the detergent has no colourant.
White film on inside surface	Hard water minerals	To clean the interior, use a damp soft cloth with dishwasher detergent and wear rubber gloves. Never use any other cleaner than dishwasher detergent otherwise, it may cause foaming or suds.
There are rust stains on cutlery	The affected items are not corrosion resistant.	Avoid washing items that are not corrosion resistant in the dishwasher.
	A program was not run after dishwasher salt was added. Traces of salt have gotten into the wash cycle	Always run a wash program without any crockery after adding salt. Do not select the Turbo function (if present), after adding dishwasher salt.
	The lid of the softener is loose.	Check the softener lid is secure.
Knocking noise in the dishwasher	A spray arm is knocking against an item in a basket	Interrupt the program and rearrange the items which are obstructing the spray arm.
Knocking noise while dishwasher is in use	Items of crockery are loose in the dishwasher	Interrupt the program and rearrange the items of crockery.
Knocking noise in the water pipes	This may be caused by on-site installation or the cross-section of the piping	This has no influence on the dishwasher function. If in doubt, contact a qualified plumber.

Problem	Possible cause	Possible solution
The dishes are not clean	The dishes were not loaded correctly.	See preparing and loading dishes
	The program was not powerful enough.	Select a more intensive program
	Not enough detergent was dispensed.	Use more or change the detergent.
	Items are blocking the movement of the spray arms.	Rearrange the items so that the spray can rotate freely.
	The filter combination is not clean or is not correctly fitted in the base of wash cabinet. This may cause the spray arm jets to get blocked.	Clean and/or fit the filter correctly. Clean the spray arm jets.
Cloudiness on glassware	Combination of soft water and too much detergent.	Use less detergent if you have soft water and select a shorter cycle to wash the glassware and to get them clean.
White spots appear on dishes and glasses.	Hard water area can cause limescale deposits.	Check water softener settings or fill status of salt container.
Black or grey marks on dishes	Aluminium utensils have rubbed against dishes.	Use a mild abrasive cleaner to eliminate those marks.
Detergent left in dispenser	Dishes block detergent dispenser.	Reload the dishes properly.

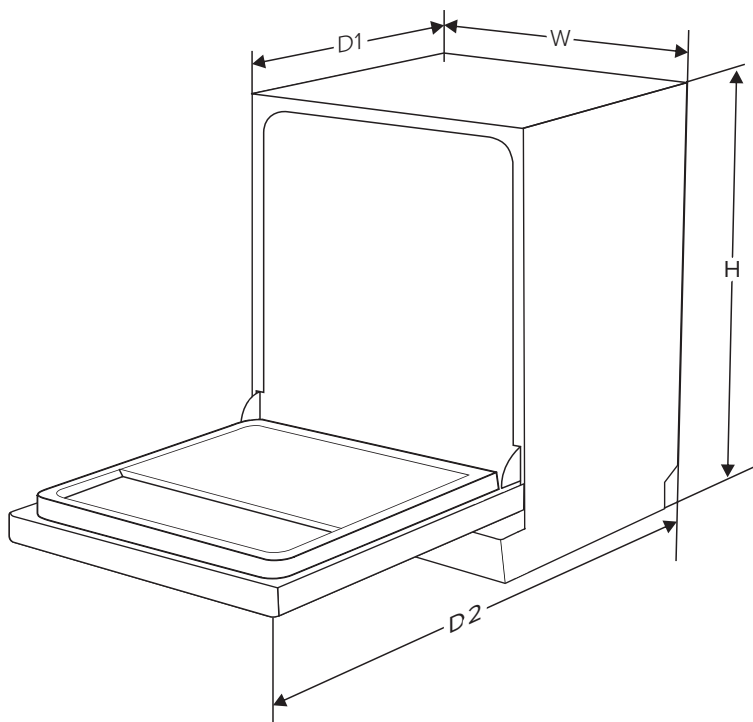
Problem	Possible cause	Possible solution
The dishes aren't drying	Improper loading.	Use gloves if detergent residue can be found on dishes to avoid skin irritations.
	Dishes are removed too soon.	Do not empty your dishwasher immediately after washing. Open the door slightly so that the steam can come out. Take out the dishes until the inside temperature is safe to touch. Unload the lower basket first to prevent the dropping water from the upper basket.
	Wrong program has been selected.	With a short program, the washing temperature is lower, decreasing cleaning performance. Choose a program with a long washing time.
	Use of cutlery with a low-quality coating.	Water drainage is more difficult with these items. Cutlery or dishes of this type are not suitable for washing in the dishwasher.

WARNING!: Self-repair or non-professional repair may cause serious risks to the safety of the user of the appliance and impact warranty.

Technical Information

Parameter	Value	
Rated capacity* (ps/place settings)	9	
Dimensions (mm)	Height (H)	815
	Width (W)	448
	Depth (D1)	550 (with door closed)
	Depth (D2)	1150 (with door open at 90°)
EEL*	55.9	
Energy efficiency class*	E	
Cleaning performance index*	1.125	
Drying performance index*	1.065	
Energy consumption in kWh [per cycle], based on the ECO program using cold water fill. Actual energy consumption will depend on how the appliance is used.	0.704	
Water consumption in litres [per cycle], based on the ECO program. Actual water consumption will depend on how the appliance is used and on the hardness of the water.	9.0	
Program duration* (h:min)	3:55	
Type	Fully integrated	
Airborne acoustical noise emissions* (dB(A) re 1 pW)	49	
Airborne acoustical noise emission class*	C	
Standby mode (W)	0.49	
Delay start (W) (if applicable)	3.99	

*For the ECO program

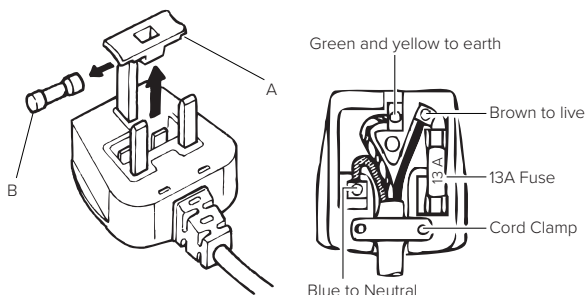


Electrical Information

Warning! This appliance must be earthed.

The mains lead of this appliance has been fitted with a BS 1363A 13 amp fused plug. To change a fuse in this type of plug, follow the steps below:

1. Remove the fuse cover and fuse.
2. Fit replacement 13A fuse, ASTA approved to BS 1362 type, into the fuse cover.
3. Replace fuse cover.



WARNING!: Do not use the appliance without the fuse cover in position.

Connecting an alternative plug

If the fitted plug is not suitable for your socket outlet, then it should be cut off and disposed of safely to avoid the risk of electric shock. A suitable alternative plug of at least 13Amp rating to BS 1363 should be used.

The colours of the wires in the mains lead of this appliance may not correspond with the coloured markings identifying the terminals in your plug, proceed as follows:

- The GREEN and YELLOW wire must be connected to the terminal which is marked with the letter (E) or by the Earth symbol \perp or coloured GREEN and YELLOW.
- The BLUE wire must be connected to the terminal which is marked with the letter (N) or coloured BLACK or BLUE.
- The BROWN wire must be connected to the terminal which is marked with the letter (L) or coloured RED or BROWN.

If in doubt regarding the electrical connection of this appliance, consult a qualified electrician.

Do not shorten the supply cable, the appliance may require removing for servicing.

NOTE: Ensure that the plug socket is situated in an easily accessible place.

Notes



Serviced by



For service or queries relating to your product please contact:

The Customer Care Department on **01949 862 012** or email **customer.care@cda.co.uk**

For more information please contact:

The Sales Department on **01949 862 010** or email **sales@cda.co.uk**

Customer Care Department. The CDA Group Ltd, Harby Road, Langar, Nottinghamshire, NG13 9HY
T: 01949 862 012 **F:** 01949 862 003 **E:** customer.care@cda.co.uk